

# THE CLEAR REPORT

## Centre for Digital Built Britain funds housing network

The Digital Built Britain Housing Network, funded by the Centre for Digital Built Britain (CDBB), has published two position papers since it was established in June.

In the first paper, the network examines how digital tools and technologies can support independent living for older people, while the second addresses off-site housing manufacture in the UK and its role in a digital building Britain.

The housing network, which is being run by the Cambridge Centre for Housing Policy and Research (CCHPR), is one of six networks being funded by the CDBB to work towards forming the agenda for future research in support of a digital built Britain.

The housing network builds on CCHPR's recent research for CDBB which looked at the need for innovation in construction and experimentation with new forms of housing delivery such as modular housing.

The objective of the network is to facilitate dialogue between key stakeholders in relation to the construction, management, servicing and lived experience of housing in the development of a digital building Britain. Through its work, it will also identify the gaps in knowledge and capabilities to scope out a research programme to meet the needs of UK plc in delivering affordable, sustainable and inclusive housing in a digital Britain.

The housing network had an initial meeting in Cambridge in the summer, which was well attended by academics and sector experts. Those who attended will now support CCHPR researchers to continue to develop further position papers.

For more information, please contact Gemma Burgess on [g1b36@cam.ac.uk](mailto:g1b36@cam.ac.uk) or find out more on the [CCHPR website](#). ■

## Three-city look at affordable housing

Dr Sónia Alves, Marie Skłodowska-Curie Postdoctoral Research Fellow at the Cambridge Centre for Housing and Planning Research (CCHPR), is preparing for the fieldwork stage of her Planning for Affordable Housing (PLANAFFHO) project.

Her two-year fellowship aims to examine how land use planning contributes to the provision of affordable housing for people on low incomes, and how it has promoted a mix of housing tenures within new developments in three European capital cities - Copenhagen, Lisbon and London - since 2007.

The research is investigating planning and housing activities in the three cities, in particular how they address problems of housing shortage, affordability, and segregation of housing tenures. The research aims to provide practical knowledge and innovative advice to decision-makers on what can be done regarding these huge societal challenges.

Alves will visit planning departments and non-profit housing associations in Copenhagen, Lisbon, and London, aiming to contribute to a mutual exchange of knowledge. ■

## Student numbers outpace Cambridge average

Student applications for the new academic year outpaced the general trend for social sciences subjects at the University of Cambridge this year. Against falls elsewhere, applications increased for the Land Economy Tripos.

The Land Economy Department welcomed 58 new first year students in October, with Professor Colin Lizieri, Head of Department, attributing the rise to the more applied nature of Land Economy versus many other social science subjects and to determined efforts to widen access and attract students from a range of backgrounds.

Full-time applications for the postgraduate MPhil programmes were also up around 5% with some 100 new students joining the Department in October with around half starting the Real Estate & Finance programme and the rest split largely between the Environmental Policy and Planning, Growth and Regeneration MPhils.

There has been no obvious drop in applications from non-UK students due to Brexit, with any negative effects perhaps offset by the fall in the pounds making the courses less expensive for those outside the UK. ■



## CUREFASIA conference in London

The Cambridge University Department of Land Economy, Cambridge University Real Estate Finance Asian Alumni Society (CUREFASIA) and the Britain China Real Estate Association will jointly host the 6th International Real Estate Finance and Investment Conference in London next month.

The one-day conference on Tuesday 27 November will look at the role of London can play to facilitate Anglo-Sino cooperation in belt and road economy. It will also examine strategies and trends for Chinese real estate investments in London, the impact of disruptive technology as well as real estate value

investing and alternative real estate.

Keynote speakers include Humbert Pang, Managing Principal of Gaw Capital Partners; Dr Hubert Shea, Executive President, Dongdu International; Alistair Dixon, Chairman of Azimuth Partners and Lord Wei of Shoreditch. Speakers from the University of Cambridge include Professor Phil Allmendinger, Head of the School of Humanities and Social Sciences and Professor Colin Lizieri, Grosvenor Professor of Real Estate Finance, Head of the Department of Land Economy.

For more information and to attend the conference, contact Helen Boa on [hxb20@cam.ac.uk](mailto:hxb20@cam.ac.uk). ■

## EESRC fund for CCHPR housing research

Kathryn Muir, one of the Cambridge Centre for Housing Policy and Research's (CCHPR) early career researchers, has won funding from the ESRC Impact Acceleration Account to increase the impact of research into shared housing for non-resident parents.

The research, originally commissioned by Commonweal Housing, explored different types of shared housing for non-resident parents, who live apart from their children but still contribute to their children's care.

Muir will be hosting a round table event on the topic in November. ■

## Cambridge hosts BIOECON conference

The Department of Land Economy hosted the 20th BIOECON conference last month with around 130 attendees gathered in Cambridge to discuss the economics of biodiversity.

From the University's side, participation was led by Professor Andreas Kontoleon, Director of Cambridge Centre for Environment, Energy and Natural Resource Governance (C-EENRG), who along with the representatives from the

London School of Economics and Centro Euro-Mediterraneo sui Cambio Climatici co-hosted the event.

Topics ranged from land-use change to biodiversity measurement, from fisheries to forestry to wildlife management, and from sustainability to natural capital via intergenerational equity. Around 70 scientific papers were presented in five parallel sessions and two policy plenary sessions. ■



## Events

- **Thursday 1 November** 4pm – 7pm. CULS and CLEAB Annual Careers in Property Fair, The Guildhall, Cambridge CB2 3QJ
- **Tuesday 20 November** 5.30pm for 6pm. CULS Event, Denman Lecture given by Paul Munro-Faure, Cambridge, venue tbc
- **Thursday 22 November**, 7.45am – 9.30am. CULS event, Market Trends – Deal or no Deal: Prospects for Property Under Brexit, BDO International, London, W1U 7EU
- **Tuesday 27 November**, 5.30pm for 6pm. CULS event, 'Procurement post Grenfell and Carillion' talk by Professor David Mosey PhD, Kings College London, Trowers & Hamlins, London EC1Y 8YZ

For more information, contact [ali@cleab.org](mailto:ali@cleab.org)

## CCHPR to look at “genuinely affordable” rents

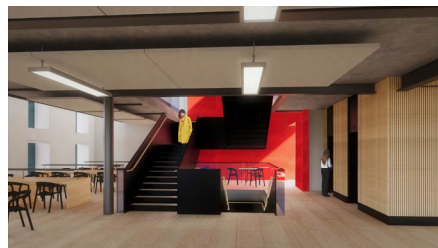
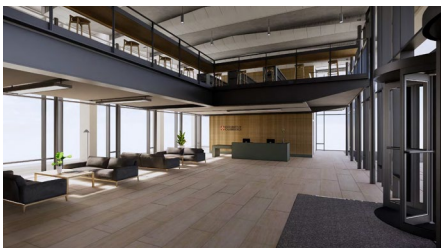
The Joseph Rowntree Foundation and CHS Group, a Cambridgeshire-based housing, care and community services provider, commissioned the Cambridge Centre for Housing and Planning Research (CCHPR) to explore how the CHS Group can set rents that are genuinely affordable for its clients.

The research is being used to inform CHS's policy on rent setting beyond 2020 and provides an opportunity to influence sector thinking and relevant government policy. In recent years, changes to government policy have resulted in a sharp reduction in the supply of new homes at social formula rents.

Using statistical modelling, developed in house, to model tenants' incomes in order to estimate the impact of current rents and benefits on affordability for CHS tenants, the research identified changes which are possible within the current regulatory system.

The research will enable CHS Group to contribute to the policy debate about the future of rent policy in social housing and the affordability of rents to tenants. ■





## Designs take shape for Department building

Work on the Central Range Building, which will become the new home to the Department of Land Economy, has progressed to a detailed design stage.

Renderings from architect Wilkinson Eyre show images of how the interior of the building on the New Museums site will look.

Alongside the design work, the Land Economy Department is actively seeking funding for different aspects of the project and would appreciate any support the CLEAB members can offer.

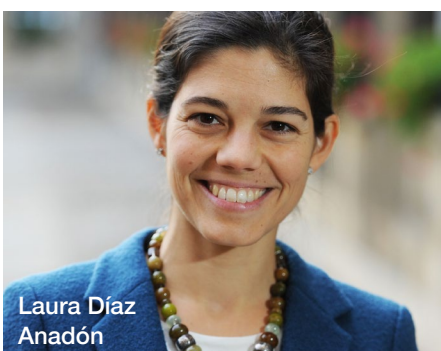
A tour of the New Museums site with architect Stafford Critchlow of Wilkinson Eyre and Colin Lizieri, will take place prior to the CLEAB meeting on Tuesday 23 October. ■

## Award for Díaz Anadón

Laura Díaz Anadón, Professor of Climate Change Policy, at the University of Cambridge has won the 2018 Banco Sabadell Award for Economic Research.

She receives EUR30,000 for her project that combines core research with the development of public policy to guide the work carried out by governments and international organisations.

Díaz Anadón's research uses optimisation models, econometric methods, and sometimes supplements quantitative assessments with qualitative evaluations based on interviews. One recent project was an in-depth investigation into policies and technologies of the US and China, which have the highest volumes of greenhouse gas emissions. ■



Laura Díaz Anadón

## Tech talk at Future Cities Conference

The Land Economy Department hosted the third Future Cities Conference in July with more than 100 attendees joining the event to hear presentations and debate on *Successful Cities of the Future*.

Technology was a strong strand throughout the day, starting with keynote speaker Chris Webster, Dean, Faculty of Architecture and Chair Professor in Urban Planning and Development Economics, University of Hong Kong. He presented on operational and strategic issues in integrating technology into cities and the built environment. This included a particular focus on health and wellbeing – including mental health and obesity issues.

There were insights on city success in the face of technological change from Professor Calvin Jones, Professor of Economics and Director of Public Value Delivery at Cardiff Business School, with many major tech companies bringing innovation to cities through new services but which, with their global footprint, contributed relatively little to economic productivity.

Benefits that technology could bring was also raised by Rick Robinson, Digital Property and Cities Business Leader for Arup, who put forward many initiatives where innovation was helping build communities and connections in cities.

The conference looked at the role



Professor Chris Webster

infrastructure played as an enabler for cities, and strategic alliances to help scale up housing delivery. Professor Colin Lizieri, Head of the Department of Land Economy, also contributed an investment perspective on how fragmented ownership of cities, particularly with increased international investment, could potentially reduce the ability for cities to solve issues cohesively.

The Cambridge Future Cities Conference was sponsored by Capital & Counties as part of a three-year programme. This included funding eight annual fellowships for PhD students to develop their research about how future cities may be designed, developed, operated and lived within to meet social, economic and environmental aims. This year's fellows, which represented eight different departments, all presented at the conference.

Further details of the content of the sessions is available through the Future Cities page on the Department's [website](#). ■